

# Sandhill Stone

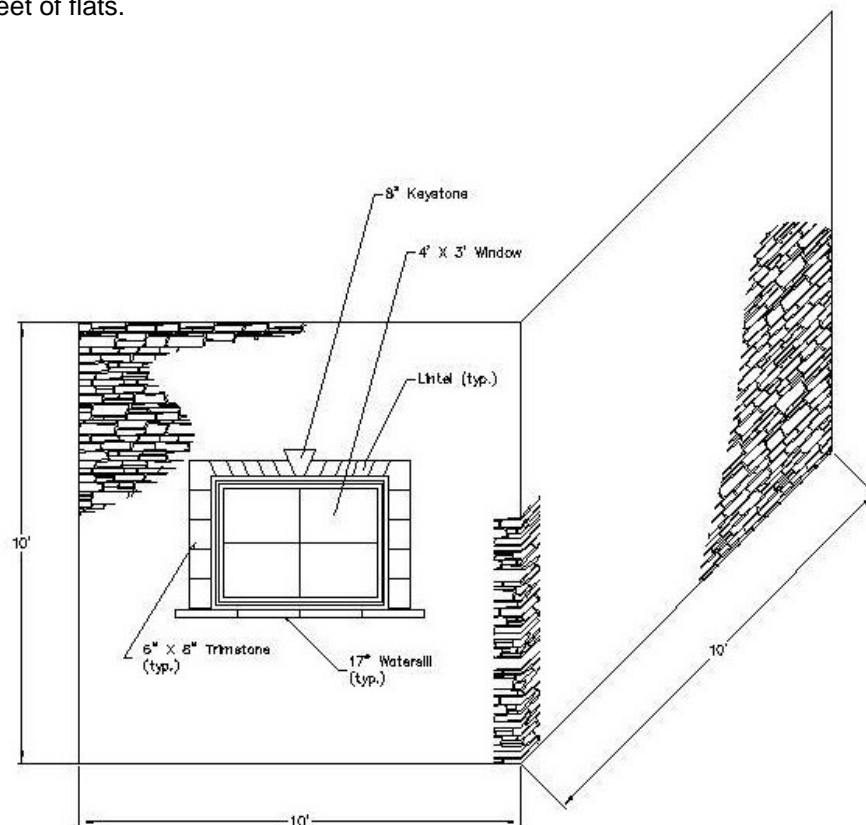
## ESTIMATING YOUR PROJECT

**STEP 1** Measure and multiply the length of the wall by the height of each wall to be covered. This will give you the gross area square footage of flats.

**STEP 2** Measure and calculate the total square footage of all openings (windows, doors, etc.). Deduct this footage from the gross footage amount.

**STEP 3** Measure the total linear feet of corners needed. When figuring corners to flats, a good rule to remember is a linear foot of corners averages approximately 3/4 of a foot of flat coverage. Subtract this footage from your flat footage, and this gives you the net feet of flats.

### EXAMPLE:



**STEP 1**  $10' \times 10' + 10' \times 10' = 200 \text{ ft}^2$

**STEP 2**  $4' \times 3' \text{ Window} = 12 \text{ ft}^2$   
 $200 \text{ ft}^2 - 12 \text{ ft}^2 = 188 \text{ ft}^2$

**STEP 3**  $10' \text{ Corners} \times 0.75' = 7.5 \text{ ft}^2$   
 $188 \text{ ft}^2 - 7.5 \text{ ft}^2 = 180.5 \text{ ft}^2$

### PLACING YOUR STONE ORDER

Order your net square feet of flats. **180 square feet**

Order your net linear feet of corners. **10 linear feet**

Order any accessories needed by the piece (Capstones, Window Trim, etc.). **1 Keystone, 5 left lintels, 5 right lintels, 10-6"X8" Trim Stones, 4-17" Water sills**

**You may wish to order extra stone to allow for trimming and cutting.**